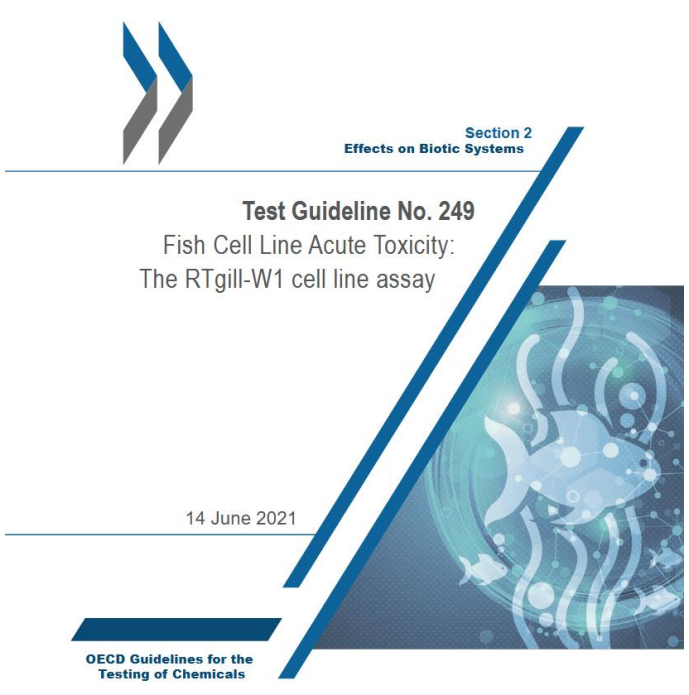


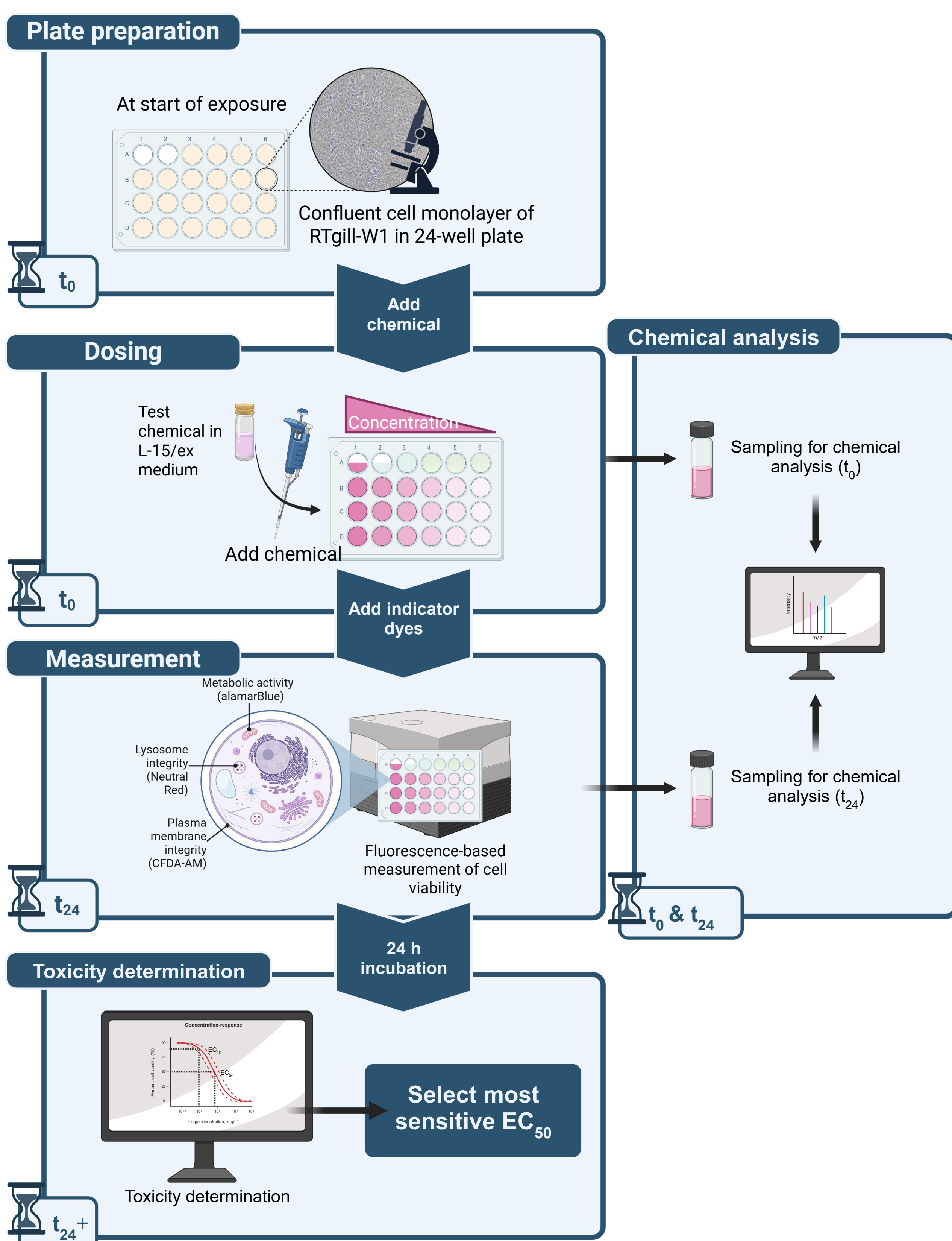
Checklist-based quality criteria for generating and reporting acute fish cell line data in the FACT database.



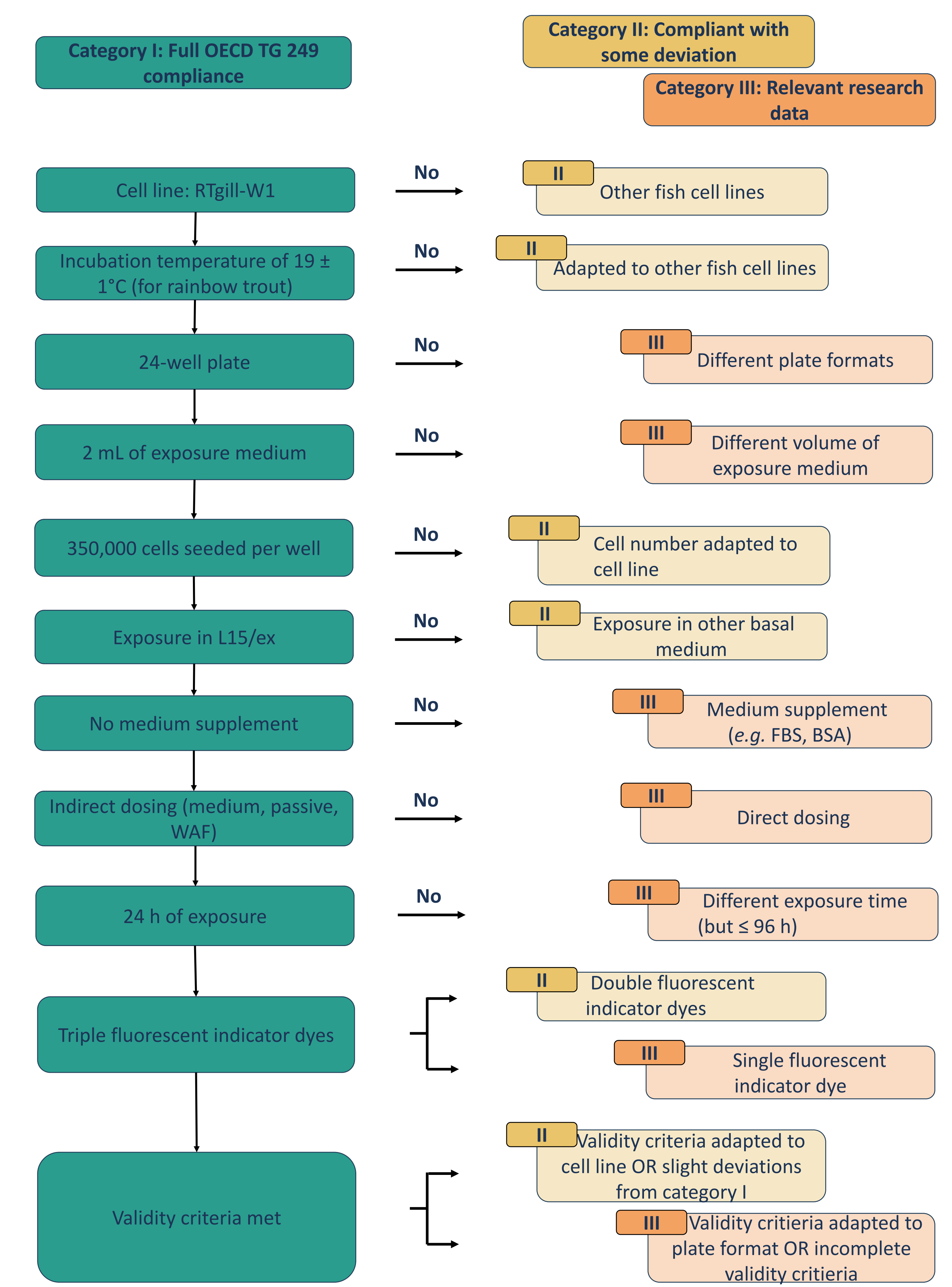
Background & motivation

- Data on fish cell line toxicity often **deviates** from the standard protocol (OECD TG 249) and/or is **incompletely reported**.
- Collecting available data enables **characterization** and understanding of the **applicability domain (AD)** of the assay.
- We offer a **checklist** to guide **performance and reporting** of fish cell line viability assays.

How the OECD TG 249 assay works



Data assignment to the OECD TG 249 compliance category to evaluate the level of deviation (I-III)



FACT QC-Checklist for data reporting

Key inclusion criteria for the FACT database

- used a fish cell line,
- endpoint is cell viability,
- exposure time ≤ 96 h,
- confluent monolayer at start of exposure.



Checklist includes information on:

- Test substance (e.g., identifiers, chemical properties)
- In vitro assay (e.g., fish cell line, experimental set-up)
- Validity criteria (e.g., solvent control, background fluorescence)

OECD TG 249 compliance category assignment

Reporting templates

- Reporting is standardized through two Excel data reporting templates
- These are to collect all metadata and experimental data that is necessary for inclusion into the FACT database and evaluation of compliance for categorization.

Related Poster: 1.08.P-Mo033 The FACT database: A comprehensive collection of fish acute cell toxicity data.